



The CWRU Department of Astronomy offers a variety of resources for research into astrophysics and cosmology, all fully available to graduate students conducting thesis research. Opportunities also exist for students interested in instrument development projects using these facilities.

Telescopes

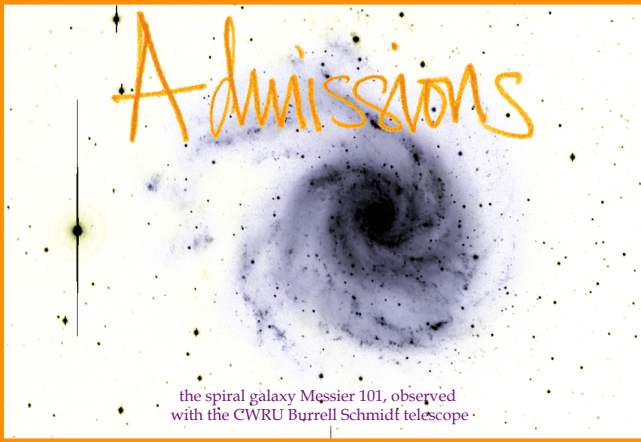
The Department owns and operates the 24/36" Burrell Schmidt telescope located at Kitt Peak National Observatory in Tucson, AZ. This telescope is optimized for deep CCD surface photometry and wide field imaging projects. We are currently using the Schmidt to obtain state-of-the-art deep images of faint features such as thick disks and halos in nearby galaxies and intracluster light in galaxy clusters. We also use its wide CCD field to study stars in the Milky Way halo and planetary nebulae and globular clusters in M31.

The Nassau Station located in nearby Chardon OH houses a 0.9m reflector which is remote operation capable. Currently supported at the Station is CCD direct imaging and stellar photometry. The Station is used in support of both education and research programs.

In addition to these local resources, we conduct research on a variety of national and international ground-based telescopes, supercomputing facilities, and the Hubble Space Telescope.

Computing

Computational facilities include a heterogeneous network of Linux, Unix, and Windows workstations, as well as a 56-node parallel Beowulf computing cluster shared jointly with the Department of Physics



the spiral galaxy Messier 101, observed with the CWRU Burrell Schmidt telescope

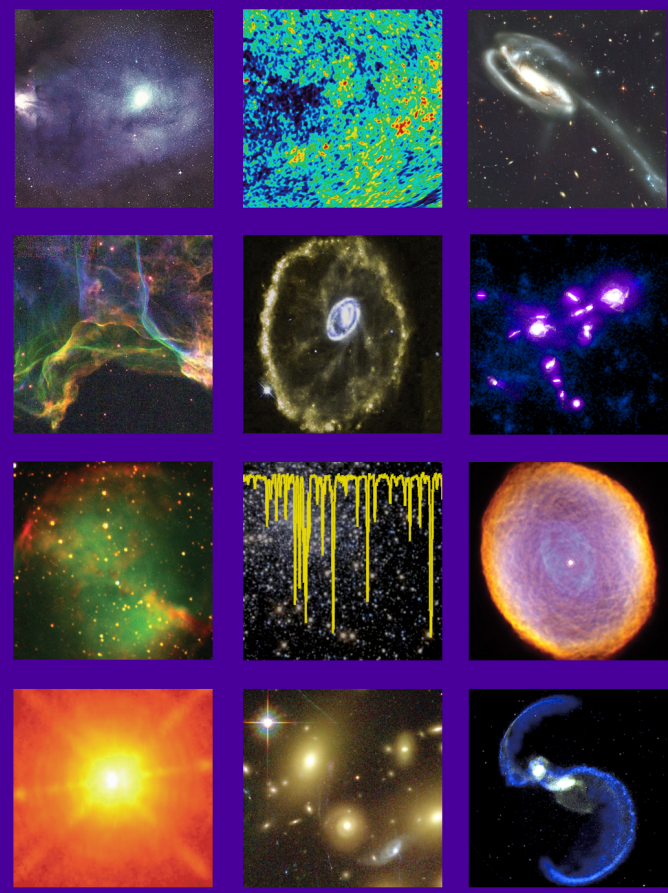
Prospective graduate students must submit scores on the Graduate Record Examination including the advanced physics test. Further information on the department's graduate programs, and details concerning financial aid, are available through the departmental office.

Graduate applications in astronomy are normally due by January 1 for admission in the following fall; however, under special circumstances late applications will be considered.

for more information, contact
 Department of Astronomy
 5th floor, Sears Building
 Case Western Reserve University
 10900 Euclid Ave.
 Cleveland, OH 44106



Case Western Reserve University



Department of Astronomy Warner and Swasey Observatory

graduate program